



2 Witney Way,
Baldon Business Park,
Tyne & Wear,
United Kingdom.
NE35 9PE.

Comments, queries or orders
please contact:
Tel: 0191 519 0111
Fax: 0191 519 0283

Ø = Diameter
H= Height

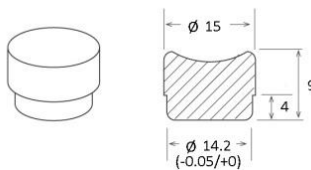


Altomed Omnifit Punch System and the **Sterile** PTFE (Polytetrafluorethylene) Cutting Blocks



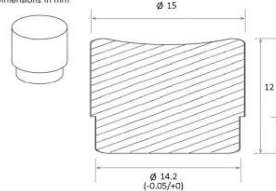
A7012S PTFE Corneal Punch 9mm High

Dimensions in mm



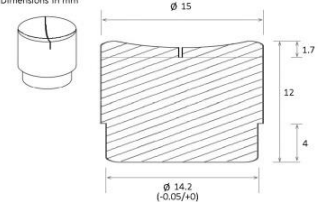
A7012LS PTFE Corneal Punch 12mm High

Dimensions in mm



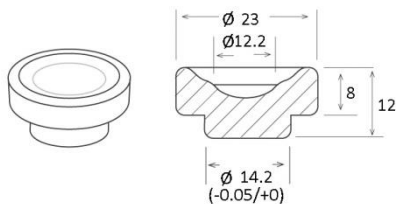
A7012XS PTFE Corneal Punch 12mm High With Cross Hairs

Dimensions in mm



A7022S M^cRae PTFE Corneal Cutting Block

Dimensions in mm



Instructions:

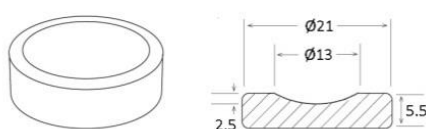
Only to be used by suitably trained healthcare professionals. The PTFE Blocks act as a cutting base for the donor cornea. The **A7012**, **A7012L**, **A7012X** and the **A7022** PTFE Corneal Cutting Blocks are designed to be used in the Omnifit Punch System **A7010** or **A7011** or **Similar System** which holds and guides the trephine in a vertical trajectory.

- Ensure Omnifit Punch System is on a flat secure surface, place sterilised PTFE Cutting Block in base hole, ensure fit is correct, i.e. Block lip is fully flush against base and there is no lateral movement. If the block does not fit then it cannot be used on the Punch System in question. Contact Altomed for alternative blocks.
- Keeping your fingers away from the cutting edge; carefully check the Altomed Trephine Blade for any handling damage, chips, cracks etc. Do not use if damaged.
- Remove the Piston from the base and place Altomed Trephine Blade over its three arms so the non-cutting edge is snug against the ridges. Rotate the silver barrel clockwise to open the arms, ensure the trephine is secure and positioned correctly. Release and reseal the trephine if the blade is at an angle. Do not over tighten the piston arms.
- Place the Donor Tissue with the endothelial surface upwards on the PTFE Cutting Block. Ensure the donor tissue is lined up as required to obtain the correct incision site.
- Carefully insert the piston into the base, ensure the tissue is still in the correct position, then press down firmly on the piston to cut the corneal button. **DO NOT PULL THE DONOR TISSUE DURING THE CUT AS IT MAY MISHAPE IT.** Ensure the cut is complete.
- Retract the piston and obtain the corneal button from the block. If the tissue remains inside the trephine blade, carefully drip a balanced salt solution onto the endothelium to dislodge it.
- Dispose of the trephine by following hospital procedures for contaminated sharps and cutting block by hospital procedures for contaminated devices

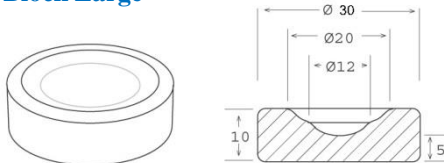
The Omnifit Punch System should have the Piston and any cutting blocks removed. The Base and Piston should be washed in a washer / disinfectant cycle using a standard validated cycle sterilise in the autoclave using a standard 134°C-137°C cycle with a minimum 3 minute holding time. See Altomed Instruction Sheet ALT I013 for further processing details on the Omnifit Punch System if required.

A7013S PTFE Corneal Punch Block Aberdeen

Dimensions in mm



A7023S PTFE Corneal Cutting Block Large



The **A7013** and **A7023** are designed to be held by hand. Place the donor cornea into the cutting block with the endothelial side up and use a hand held trephine blade to cut the donor button to size. Check the trephine for any handling damage prior to use, and dispose of after use by following hospital procedures for contaminated sharps.

Reprocessing: The trephines and cutting blocks are supplied sterile and single use and are not designed to be reprocessed or reused! The trephine blades will become bent and so blunt after use, cutting blocks may become physically damaged. This may result in possible harm such as corneal abrasion to the tissue and or malformed tissue shape, incorrect or incomplete tissue cut. Incorrect handling and reprocessing also increases the risk of contamination and infection.